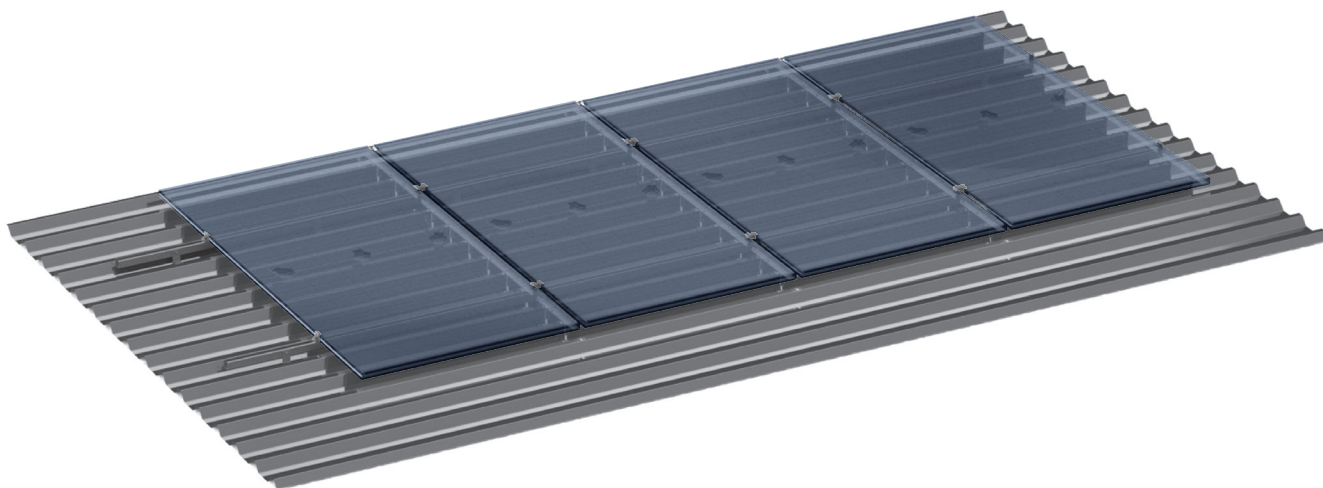


PVMSR-SI-SCF



FLEXIBLE DESIGN

The structure adapts to
different roof shapes

ALL-PURPOSE BUDGET SOLUTION

Use of galvanized steel
instead of aluminium

10-YEAR WARRANTY

Warranty against
through corrosion of
metal structures

GENERAL SPECIFICATIONS

- + For roofs with metal sheets
- + Designed for the use of PV modules of framed type
- + The structure adapts to the roof shape
- + Resistance to atmospheric loads (wind, snow)
- + Simple design ensures high installation speed
- + Use of brackets for structure mounting to a roof
- + Anti-corrosion coating on casing components applying hot-dip galvanization in accordance with ISO1461:2009

Photovoltaic mounting structure for rooftops with metal sheets, which is fixed by brackets, parallel arrangement of PV modules (framed type) with the use of clamps

PVMS-SI-SCF

TECHNICAL DATA

PV MODULES PARAMETERS

Length	unlimited*
Width	unlimited*
Height	unlimited*
Weight	unlimited*

STRUCTURE PARAMETERS

Type	rooftop
Roof mounting system	bracket
Arrangement of PV modules	parallel
Fastening PV modules to the structure	clamps

OPERATION CONDITIONS

Temperature	-40...+45 °C
Relative humidity	5-100 %
Allowable wind load	550 Pa
Allowable snow load	1800 Pa

INSTALLATION SPECIFICATIONS

Mounting method	parallel to the roof
-----------------	----------------------

*Design solutions on the use of this construction should include the calculation of the building's (roof's) load capacity, where PV modules are installed taking into account wind and snow loads for a particular region in accordance with applicable regulations.

COMPLIANCE

DBN A.3.2-2-2009	Occupational and Industrial Safety in Construction. Main Provisions.
DBN V.2.6-198:2014	Steel Structures. Design Standards.
DSTU B V.2.6-200:2014	Steel Construction Structures. Installation Requirements.
NPAOP 0.00-1.15-07	Rules of Occupational Safety during Work at Heights.
DSTU B V.2.6-75:2008	Designs of Buildings and Structures. Steel Construction Structures. General Technical Requirements.
DSTU-N B V.2.6-186:2013	Guidance for the Protection of Construction Designs of Buildings and Structures from Corrosion.
DSTU-N B A.3.1-21:2013	Guidance for the Implementation Mounting Joints of Steel Building Structures on High-Tensile Bolts